


Event Summary

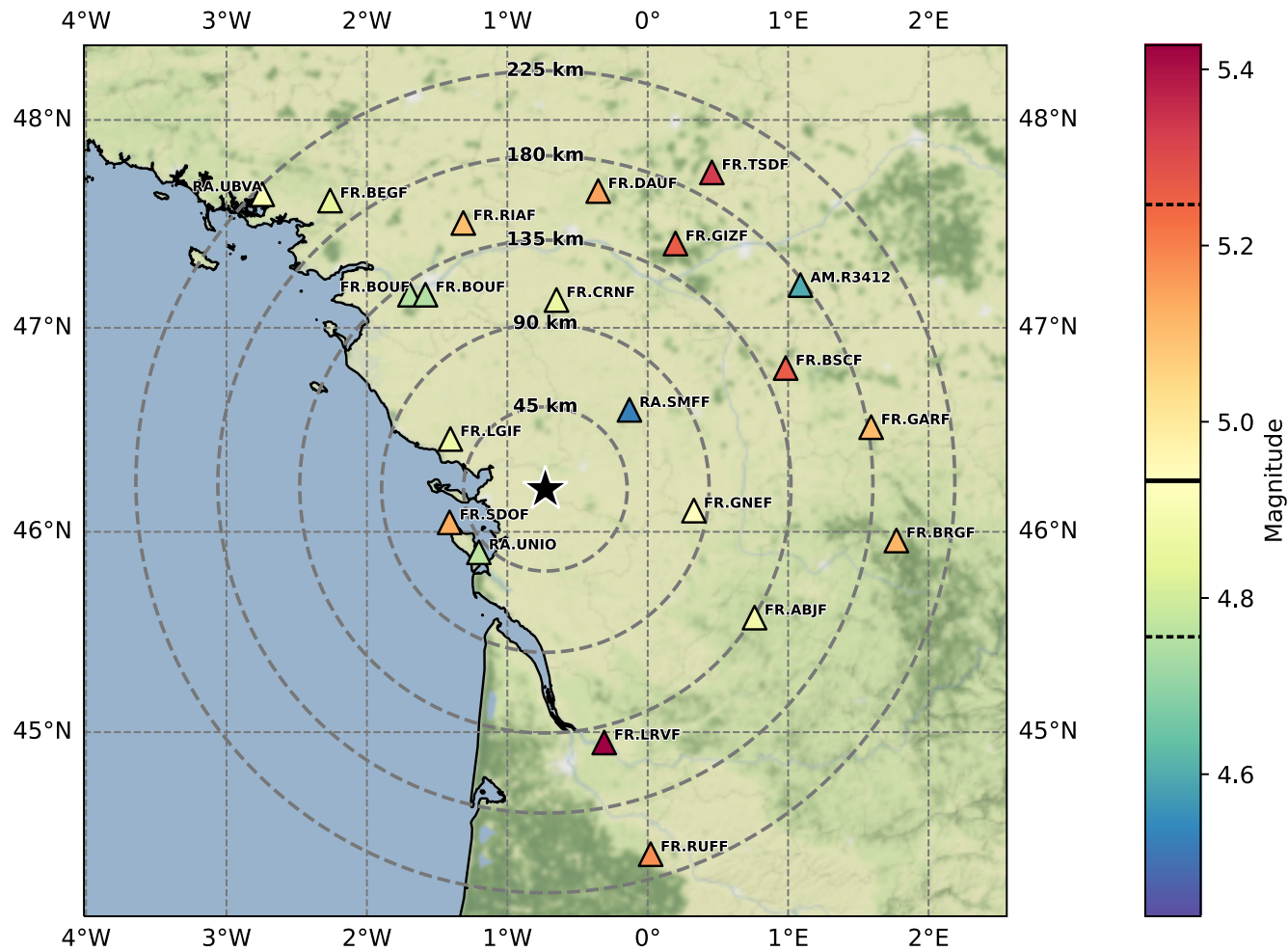
Event ID:	fr2023lznjuc 
Longitude:	-0.729 °E
Latitude:	46.210 °N
Depth:	0.7 km
Origin Time:	2023-06-16T16:38:29.600828Z
Moment Magnitude:	4.93 [- 0.18, + 0.31]
Corner Frequency:	0.846 [- 0.257, + 0.499] Hz

Moment Magnitude

Mw 4.93 [- 0.18, + 0.31]

evid: fr2023lznjuc

lon: -0.729 lat: 46.210 depth: 0.7 km time: 2023-06-16T16:38:29.600



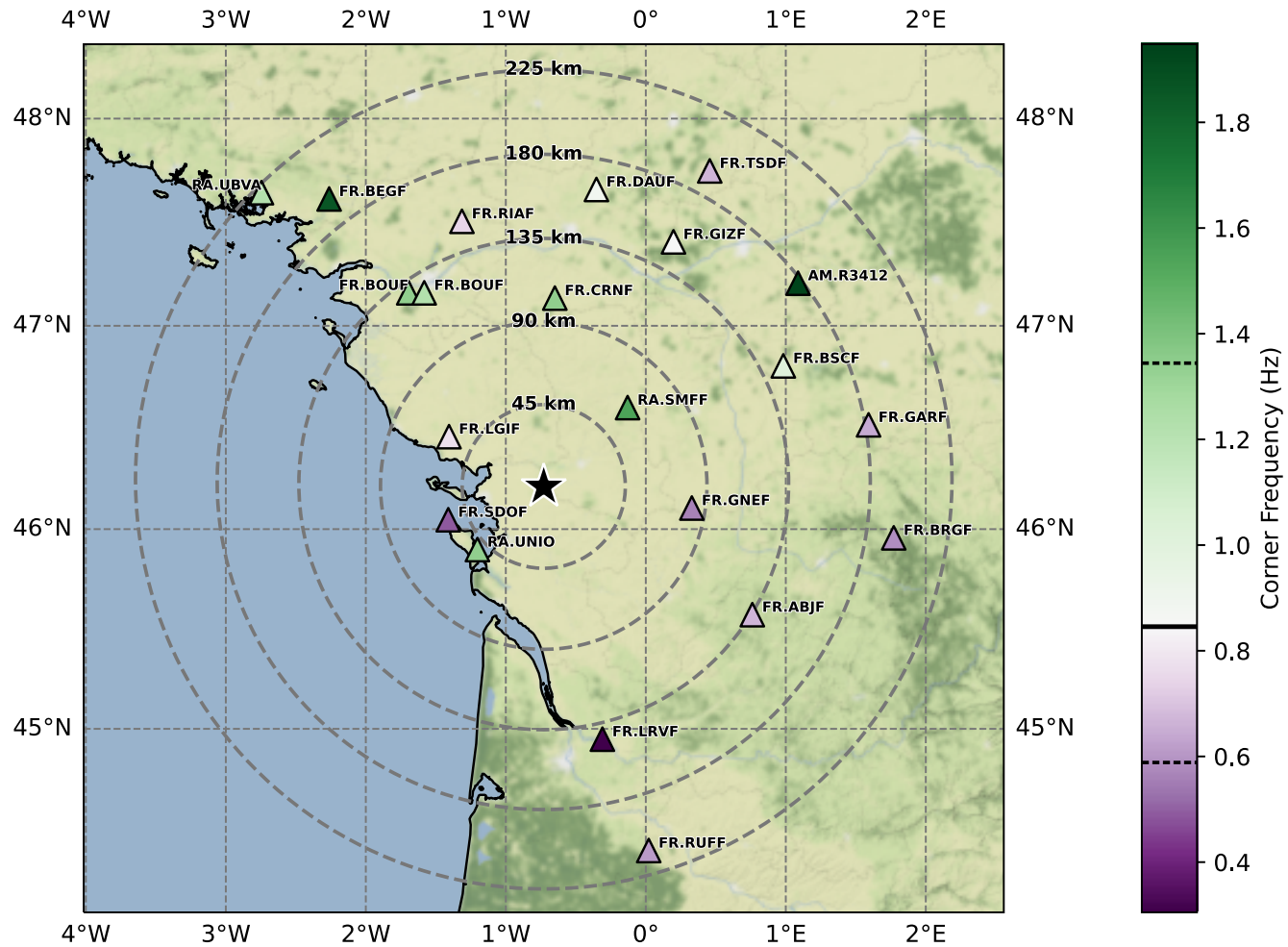
SourceSpec v1.7+37.gc9178a9 - 2023-06-16 21:07:43 CEST
Claudio Satriano - IPGP

Corner Frequency

f_c 0.846 [- 0.257, + 0.499] Hz

evid: fr2023lznjuc

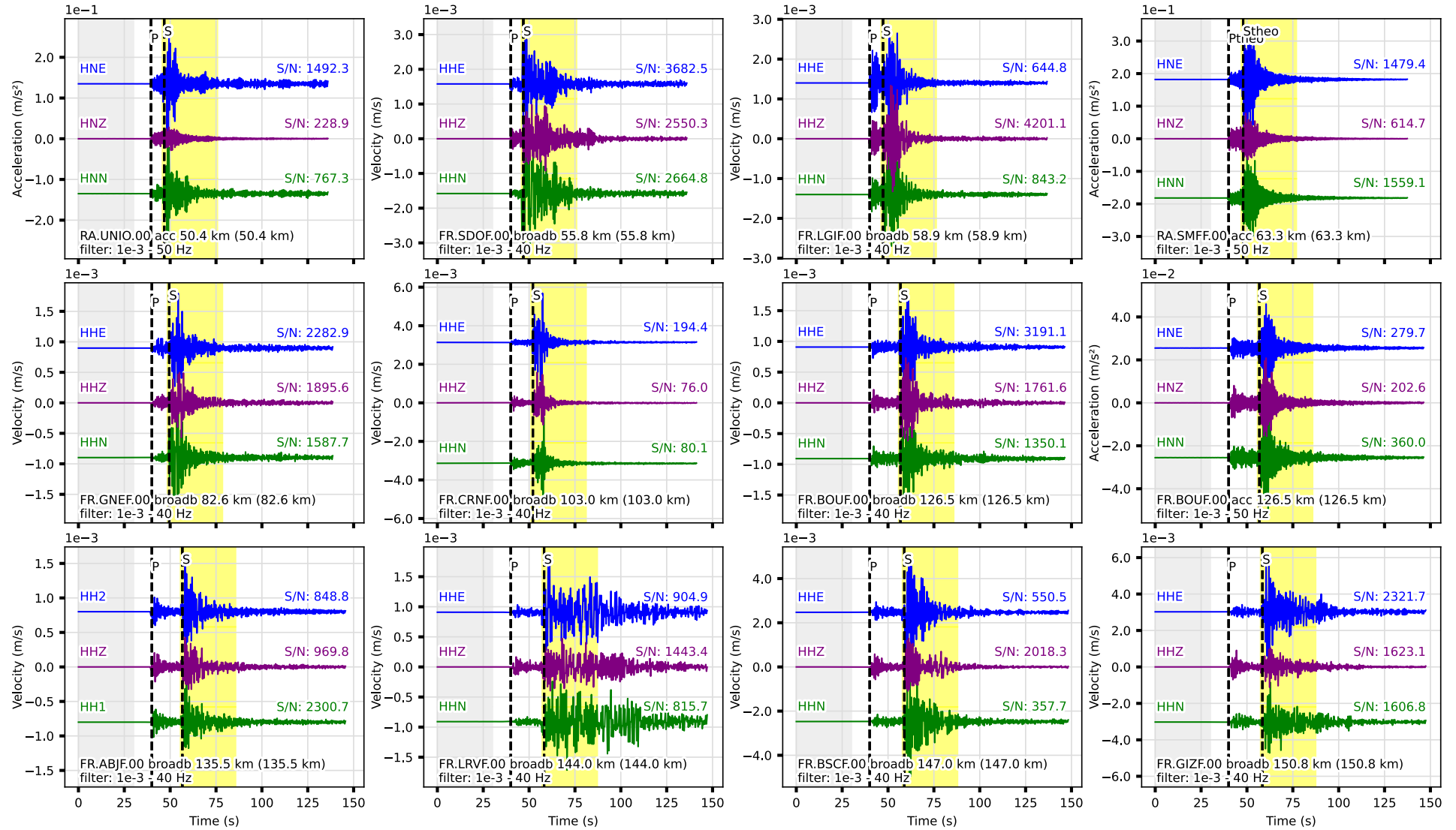
lon: -0.729 lat: 46.210 depth: 0.7 km time: 2023-06-16T16:38:29.600



SourceSpec v1.7+37.gc9178a9 - 2023-06-16 21:07:43 CEST
Claudio Satriano - IPGP

Traces (1 of 2)

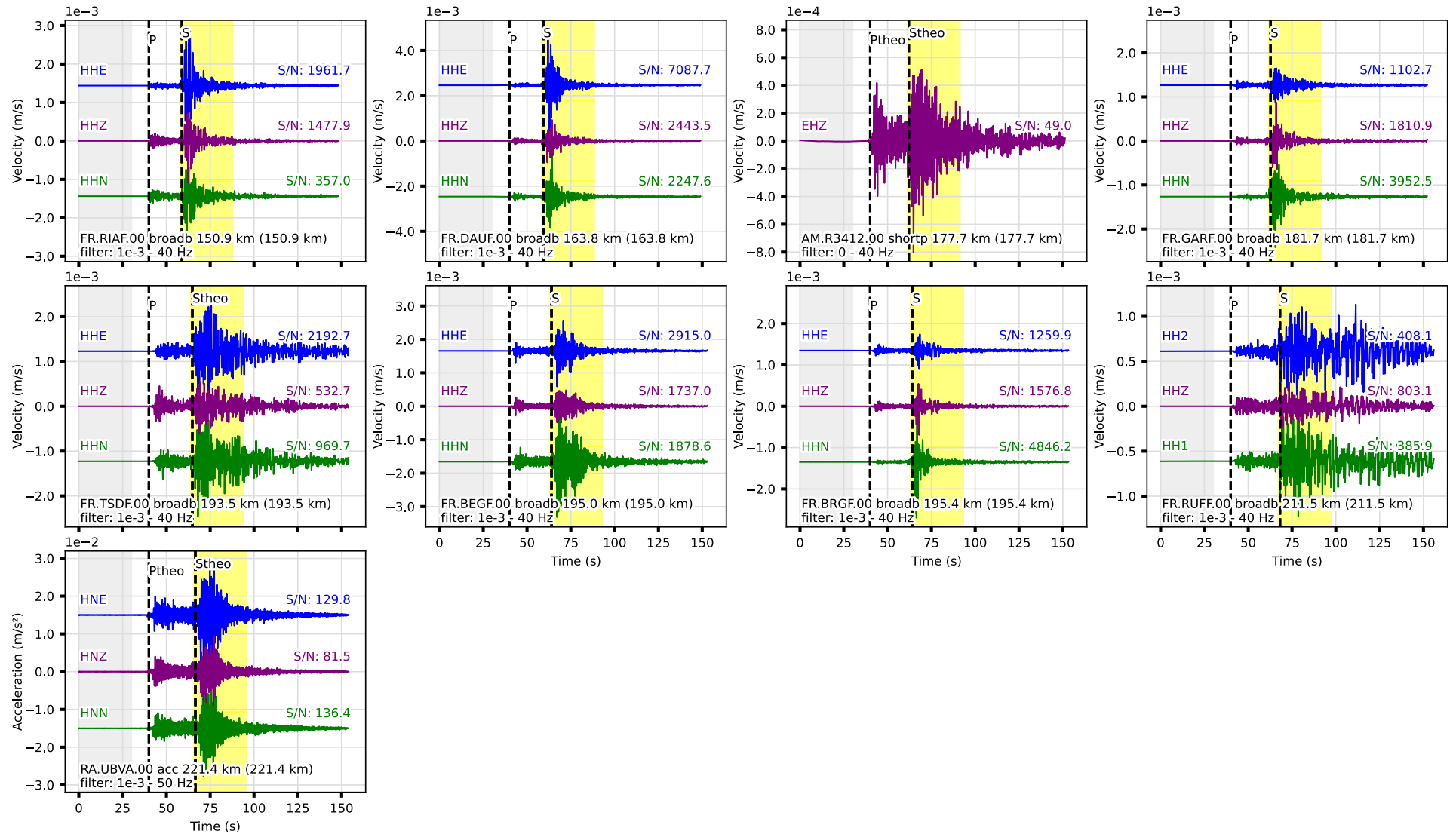
evid: fr2023lznjuc lon: -0.729 lat: 46.210 depth: 0.7 km time: 2023-06-16T16:38:29.600



SourceSpec v1.7+37.gc9178a9
Claudio Satriano - IPGP

Traces (2 of 2)

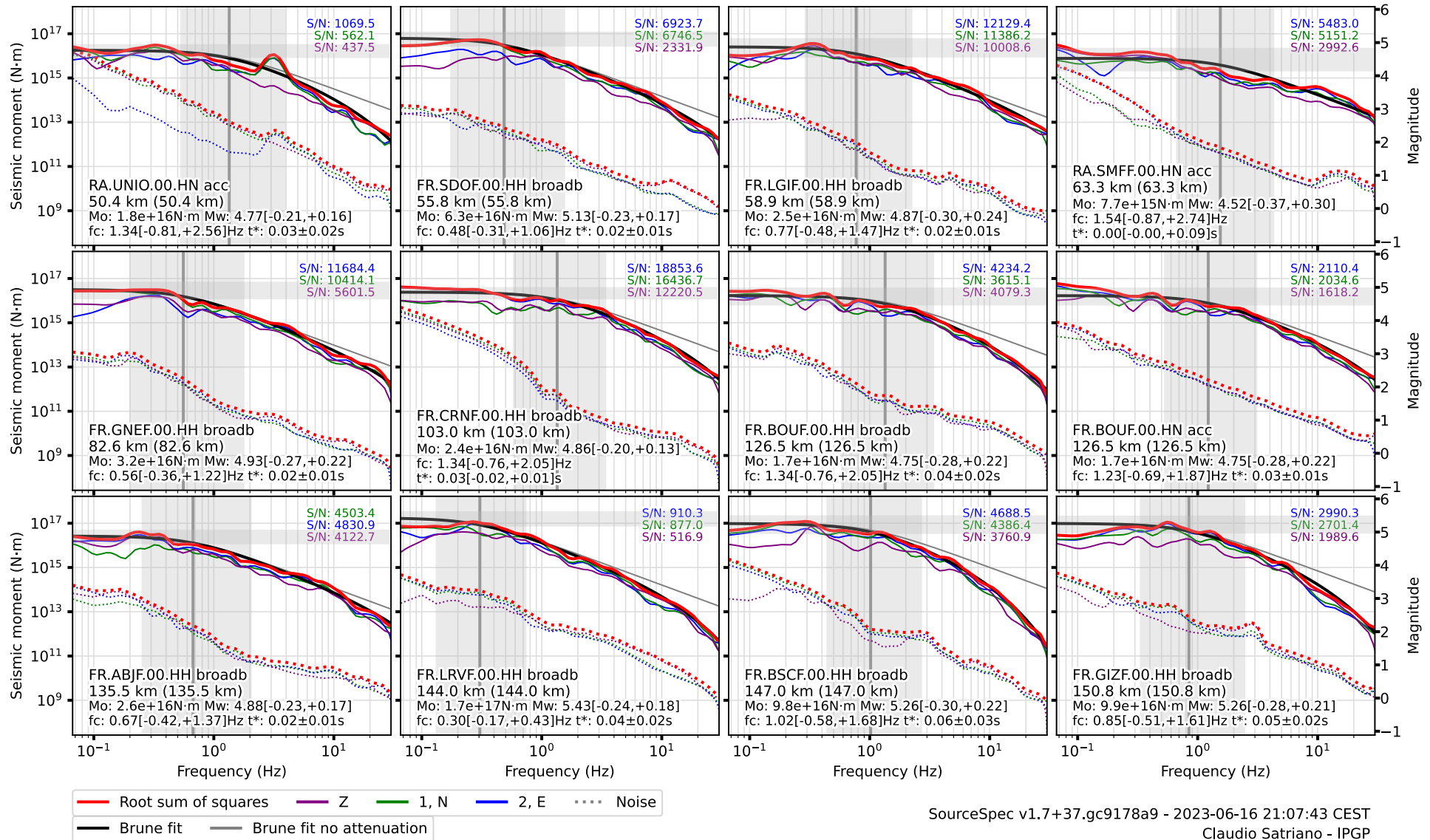
evid: fr2023lznjuc lon: -0.729 lat: 46.210 depth: 0.7 km time: 2023-06-16T16:38:29.600



SourceSpec v1.7+37.gc9178a9
Claudio Satriano - IPGP

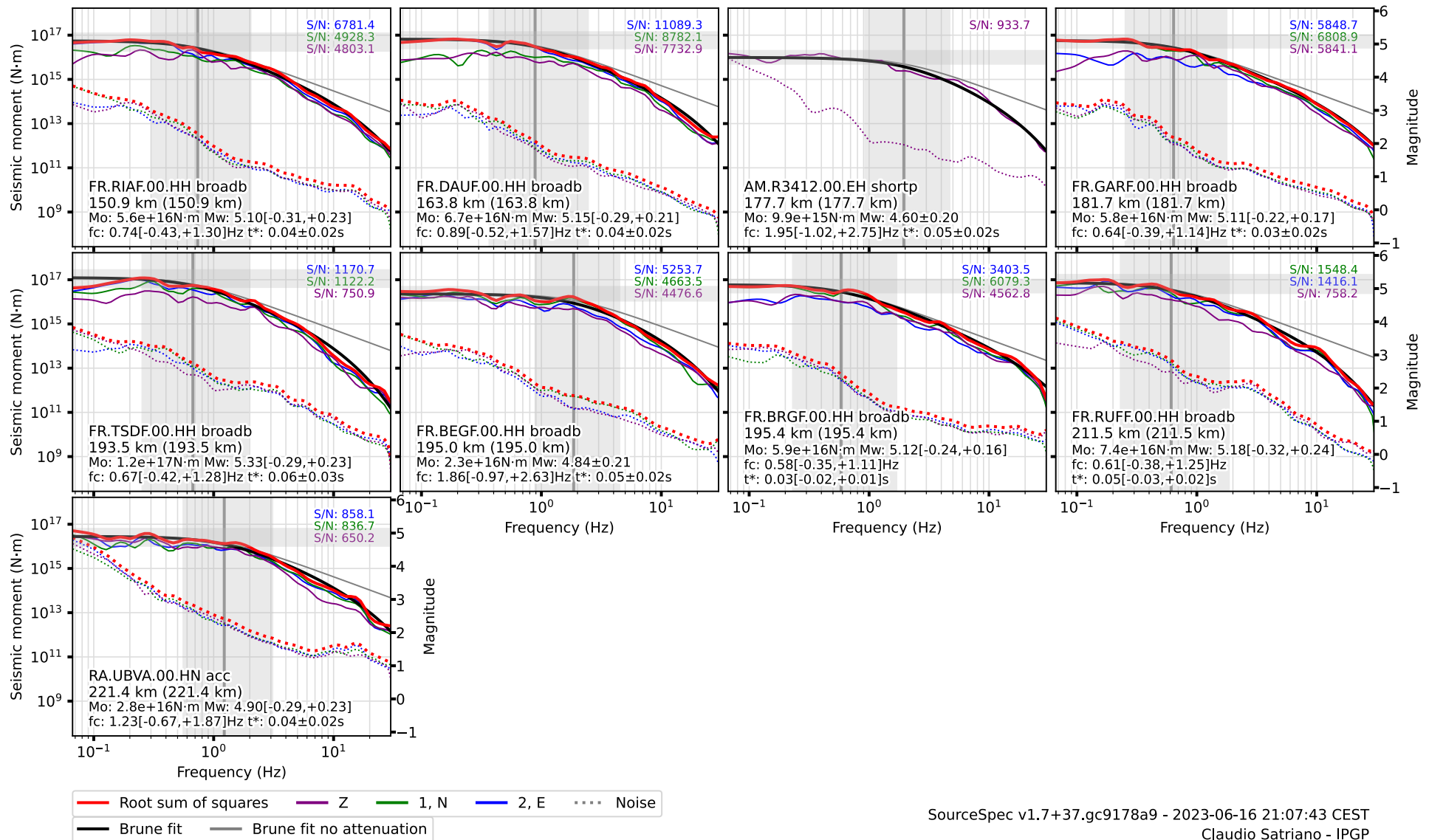
Spectra (1 of 2)

evid: fr2023lznjuc lon: -0.729 lat: 46.210 depth: 0.7 km time: 2023-06-16T16:38:29.600



Spectra (2 of 2)

evid: fr2023lznjuc lon: -0.729 lat: 46.210 depth: 0.7 km time: 2023-06-16T16:38:29.600



Inversion Information

Algorithm:	Grid search
Weighting:	Noise weighting
t-star-0:	0.045 s
Invert t-star-0:	False
t-star-0 variability:	10.0 %
t-star min, max:	[0.001, 0.2] s
fc min, max:	[0.05, 50.0] Hz
Qo min, max:	-

Summary Spectral Parameters

Note: the highlighted column indicates the reference parameters used for [Event Summary](#) and [Map Plots](#).

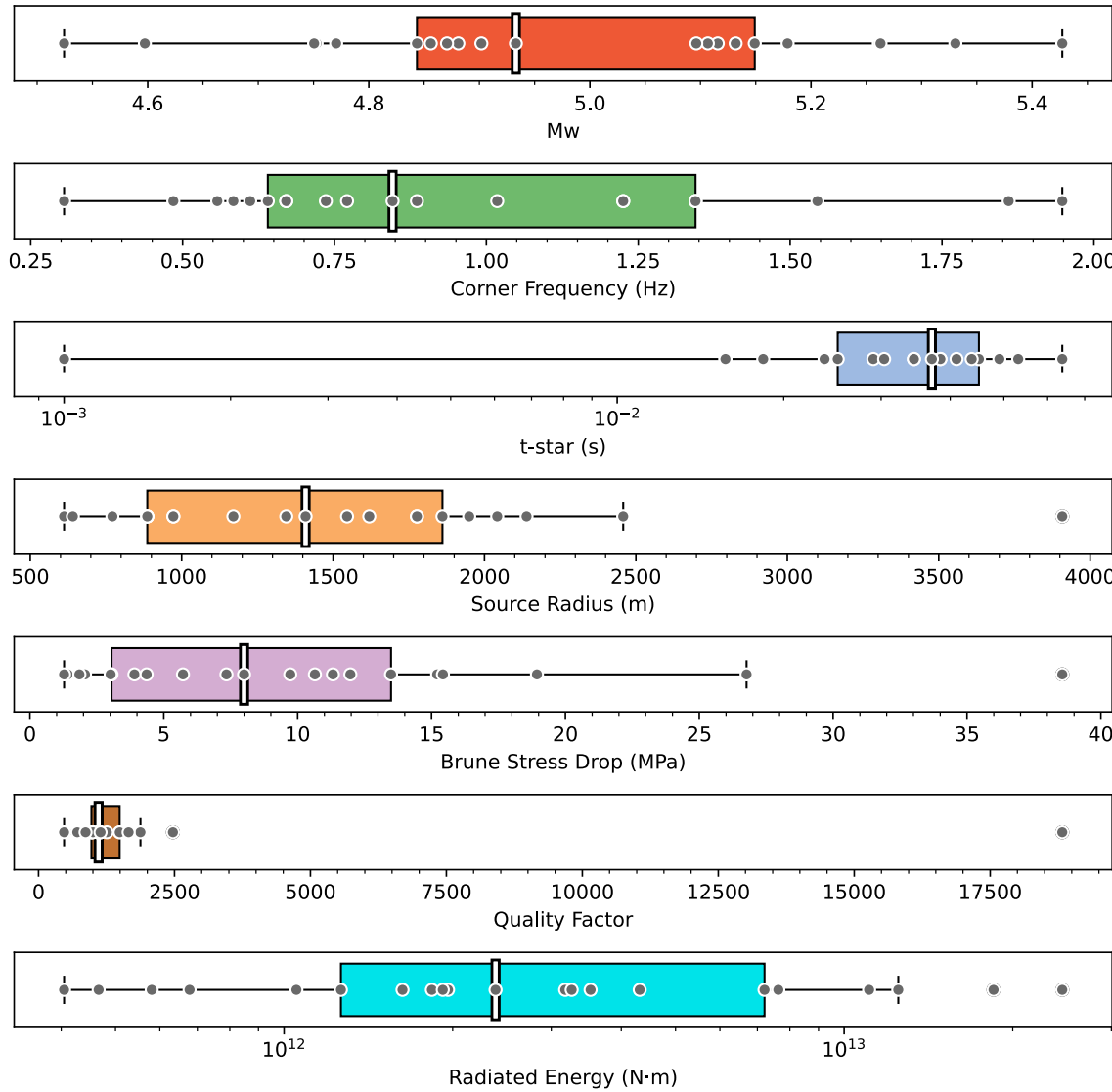
	Mean (1 sigma)	Weighted Mean (1 sigma)	Percentiles (50%, [15.9%, 84.1%])
Mw	4.99 ±0.24	4.98 ±0.23	4.93 -0.18 +0.31
Seismic Moment (N·m)	3.537e+16 -1.892e+16 +4.070e+16	3.416e+16 -1.744e+16 +3.562e+16	2.998e+16 -1.301e+16 +4.370e+16
Corner Frequency (Hz)	0.884 -0.330 +0.526	0.929 -0.359 +0.585	0.846 -0.257 +0.499
t-star (s)	0.036 ±0.015	0.027 ±0.012	0.037 -0.018 +0.011
Qo	1111.2 ±330.7	920.8 ±293.5	1094.0 -250.2 +397.5

	Mean (1 sigma)	Weighted Mean (1 sigma)	Percentiles (50%, [15.9%, 84.1%])
Source Radius (m)	1278.556 -431.327 +650.917	1198.653 -407.824 +618.134	1377.372 -490.911 +570.354
Brune Stress Drop (MPa)	6.244e+00 -3.672e+00 +8.918e+00	6.591e+00 -3.905e+00 +9.585e+00	7.670e+00 -5.592e+00 +7.505e+00
Radiated Energy (N·m)	2.199e+12 -1.390e+12 +3.779e+12		1.962e+12 -1.298e+12 +5.304e+12

Spectral Parameter Box Plots

evid: fr2023lznjuc

lon: -0.729 lat: 46.210 depth: 0.7 km time: 2023-06-16T16:38:29.600



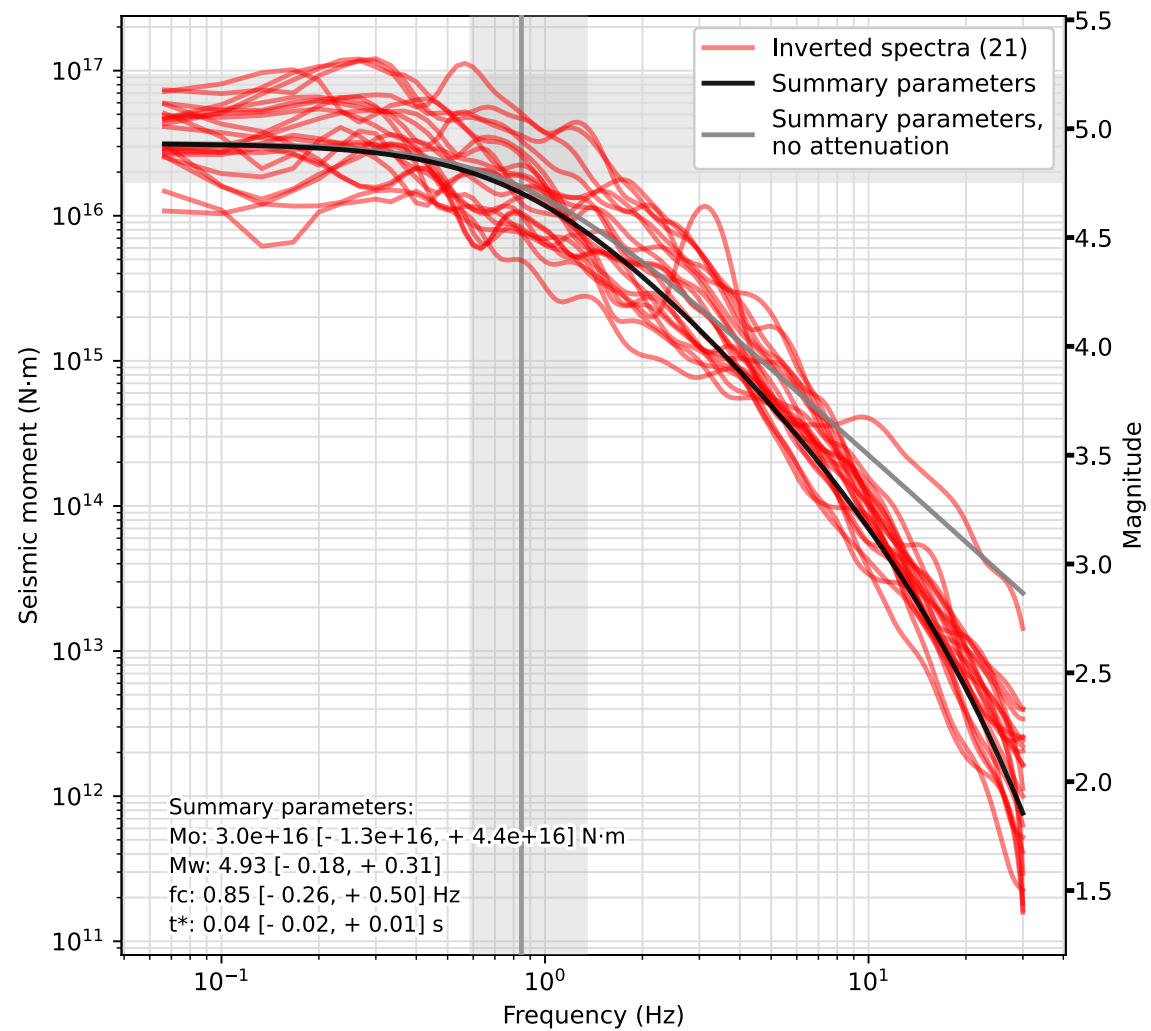
SourceSpec v1.7+37.gc9178a9 - 2023-06-16 21:07:43 CEST
Claudio Satriano - IPGP

Stacked Spectra

evid: fr2023lznjuc

lon: -0.729 lat: 46.210 depth: 0.7 km

time: 2023-06-16T16:38:29.600



SourceSpec v1.7+37.gc9178a9 - 2023-06-16 21:07:43 CEST
Claudio Satriano - IPGP

Station Parameters

Note: outliers are greyed out

Station	Type	Mw	Corner Frequency (Hz)	t-star (s)	Qo	Seismic Moment (N·m)	Brune stress drop (MPa)	Source radius (m)	Radiated Energy (N·m)	Hypocentral Distance (km)	Azimuth (°)
AM.R3412.00.EHH	shortp	4.597	1.948	0.045	1145.9	9.911e+15	1.894e+01	611.766	1.962e+12	177.717	50.751
		-0.200	-1.020	-0.023	-368.5	-4.942e+15	-1.791e+01	-358.233			
		+0.200	+2.752	+0.021	+1163.0	+9.858e+15	+5.118e+02	+672.731			
FR.ABJF.00.HHH	broadb	4.881	0.671	0.016	2471.3	2.639e+16	2.058e+00	1776.940	4.666e+11	135.542	120.901
		-0.227	-0.417	-0.009	-835.4	-1.432e+16	-2.007e+00	-1192.889			
		+0.170	+1.370	+0.008	+3642.8	+2.107e+16	+1.022e+02	+2927.323			
FR.BEGF.00.HHH	broadb	4.844	1.860	0.049	1104.4	2.319e+16	3.856e+01	640.796	1.108e+13	194.964	323.763
		-0.214	-0.974	-0.024	-349.3	-1.211e+16	-3.657e+01	-375.232			
		+0.214	+2.628	+0.023	+1060.3	+2.534e+16	+1.095e+03	+704.654			
FR.BOUF.00.HHH	broadb	4.753	1.344	0.038	972.5	1.695e+16	1.064e+01	886.461	1.627e+12	126.497	326.978
		-0.275	-0.761	-0.019	-302.8	-1.040e+16	-1.031e+01	-535.729			
		+0.220	+2.053	+0.017	+923.2	+1.930e+16	+3.570e+02	+1155.633			
FR.BOUF.00.HNH	acc	4.751	1.225	0.025	1491.3	1.682e+16	7.999e+00	972.586	1.263e+12	126.497	326.978
		-0.277	-0.693	-0.013	-483.7	-1.037e+16	-7.748e+00	-587.778			
		+0.222	+1.872	+0.012	+1704.5	+1.938e+16	+2.700e+02	+1267.909			
FR.BRGF.00.HHH	broadb	5.116	0.584	0.029	1873.9	5.936e+16	3.050e+00	2042.093	1.836e+12	195.411	97.377
		-0.239	-0.353	-0.016	-590.2	-3.337e+16	-2.967e+00	-1339.040			
		+0.159	+1.111	+0.013	+2306.6	+4.360e+16	+1.266e+02	+3119.219			
FR.BSCF.00.HHH	broadb	5.261	1.018	0.064	679.2	9.818e+16	2.677e+01	1170.752	2.452e+13	147.030	62.675
		-0.296	-0.576	-0.029	-207.5	-6.289e+16	-2.598e+01	-728.524			
		+0.222	+1.677	+0.028	+580.3	+1.133e+17	+1.043e+03	+1526.248			

Station	Type	Mw	Corner Frequency (Hz)	t-star (s)	Qo	Seismic Moment (N·m)	Brune stress drop (MPa)	Source radius (m)	Radiated Energy (N·m)	Hypocentral Distance (km)	Azimuth (°)
FR.CRNF.00.HHH	broadb	4.856	1.344	0.030	985.9	2.422e+16	1.521e+01	886.461	3.526e+12	103.001	3.346
		-0.196	-0.761	-0.016	-301.0	-1.191e+16	-1.458e+01	-535.729			
		+0.131	+2.053	+0.013	+1100.7	+1.381e+16	+3.704e+02	+1155.633			
FR.DAUF.00.HHH	broadb	5.149	0.886	0.041	1120.1	6.663e+16	1.197e+01	1345.450	7.630e+12	163.755	9.943
		-0.285	-0.519	-0.020	-350.4	-4.175e+16	-1.165e+01	-860.257			
		+0.214	+1.570	+0.019	+1066.8	+7.285e+16	+5.223e+02	+1901.068			
FR.GARF.00.HHH	broadb	5.107	0.640	0.034	1492.7	5.755e+16	3.905e+00	1861.260	1.920e+12	181.748	78.402
		-0.222	-0.387	±0.016	-474.5	-3.083e+16	-3.792e+00	-1190.057			
		+0.167	+1.135		+1302.9	+4.478e+16	+1.441e+02	+2843.003			
FR.GIZF.00.HHH	broadb	5.263	0.846	0.045	966.7	9.870e+16	1.543e+01	1409.294	1.848e+13	150.756	27.646
		-0.284	-0.511	-0.023	-310.9	-6.164e+16	-1.507e+01	-924.101			
		+0.213	+1.611	+0.021	+981.2	+1.071e+17	+7.728e+02	+2152.643			
FR.GNEF.00.HHH	broadb	4.933	0.557	0.018	1255.3	3.159e+16	1.412e+00	2138.995	4.048e+11	82.555	97.767
		-0.270	-0.356	-0.011	-381.4	-1.916e+16	-1.386e+00	-1467.792			
		+0.216	+1.218	+0.008	+1746.9	+3.505e+16	+9.500e+01	+3792.481			
FR.LGIF.00.HHH	broadb	4.871	0.771	0.016	1086.2	2.548e+16	3.015e+00	1546.216	6.781e+11	58.905	298.058
		-0.299	-0.480	-0.008	-367.2	-1.641e+16	-2.957e+00	-1013.884			
		+0.239	+1.468	+0.008	+1133.7	+3.273e+16	+1.658e+02	+2547.229			
FR.LRVF.00.HHH	broadb	5.427	0.305	0.038	1094.0	1.742e+17	1.277e+00	3908.002	2.386e+12	144.048	166.728
		-0.238	-0.173	-0.019	-340.7	-9.770e+16	-1.231e+00	-2288.414			
		+0.179	+0.431	+0.017	+1038.5	+1.488e+17	+3.198e+01	+5094.658			
FR.RIAF.00.HHH	broadb	5.096	0.736	0.044	1001.3	5.551e+16	5.717e+00	1619.587	3.177e+12	150.880	343.035
		-0.307	-0.431	-0.021	-314.6	-3.631e+16	-5.576e+00	-1035.536			
		+0.231	+1.305	+0.020	+956.6	+6.756e+16	+2.645e+02	+2288.414			

Station	Type	Mw	Corner Frequency (Hz)	t-star (s)	Qo	Seismic Moment (N·m)	Brune stress drop (MPa)	Source radius (m)	Radiated Energy (N·m)	Hypocentral Distance (km)	Azimuth (°)
FR.RUFF.00.HHH	broadb	5.179	0.611	0.053	1140.2	7.383e+16	4.359e+00	1949.581	3.262e+12	211.505	163.583
		-0.321	-0.380	-0.025	-341.6	-4.943e+16	-4.281e+00	-1308.785			
		+0.240	+1.248	+0.023	+1044.1	+9.555e+16	+2.773e+02	+3211.731			
FR.SDOF.00.HHH	broadb	5.132	0.485	0.024	712.7	6.277e+16	1.849e+00	2458.173	1.052e+12	55.757	251.245
		-0.231	-0.310	-0.012	-221.4	-3.450e+16	-1.810e+00	-1686.814			
		+0.173	+1.060	+0.011	+733.2	+5.140e+16	+1.070e+02	+4358.390			
FR.TSDF.00.HHH	broadb	5.331	0.671	0.064	864.8	1.247e+17	9.724e+00	1776.940	1.249e+13	193.459	27.367
		-0.290	-0.417	-0.031	-272.8	-7.892e+16	-9.532e+00	-1165.174			
		+0.232	+1.277	+0.029	+803.7	+1.533e+17	+5.214e+02	+2927.323			
RA.SMFF.00.HNH	acc	4.524	1.545	0.001	18825.6	7.701e+15	7.341e+00	771.359	5.803e+11	63.262	46.519
		-0.369	-0.874	-0.000	-18607.9	-5.551e+15	-7.173e+00	-493.194			
		+0.296	+2.739	+0.085	+0.0	+1.367e+16	+4.271e+02	+1005.581			
RA.UBVA.00.HNH	acc	4.902	1.225	0.037	1655.8	2.836e+16	1.349e+01	972.586	4.315e+12	221.396	316.819
		-0.293	-0.668	-0.019	-528.3	-1.804e+16	-1.303e+01	-587.778			
		+0.234	+1.872	+0.017	+1686.1	+3.530e+16	+4.754e+02	+1166.409			
RA.UNIO.00.HNH	acc	4.770	1.344	0.034	469.6	1.802e+16	1.132e+01	886.461	7.209e+12	50.428	226.820
		-0.212	-0.812	-0.020	-157.5	-9.361e+15	-1.098e+01	-581.269			
		+0.159	+2.560	+0.017	+655.3	+1.320e+16	+4.692e+02	+1354.035			